

**Vuoi un pavimento in
VERA PIETRA
ECONOMICO, 100% ECOLOGICO, 100%
DRENANTE, ADATTO A TUTTI GLI USI ed
ESTETICAMENTE FAVOLOSO?**

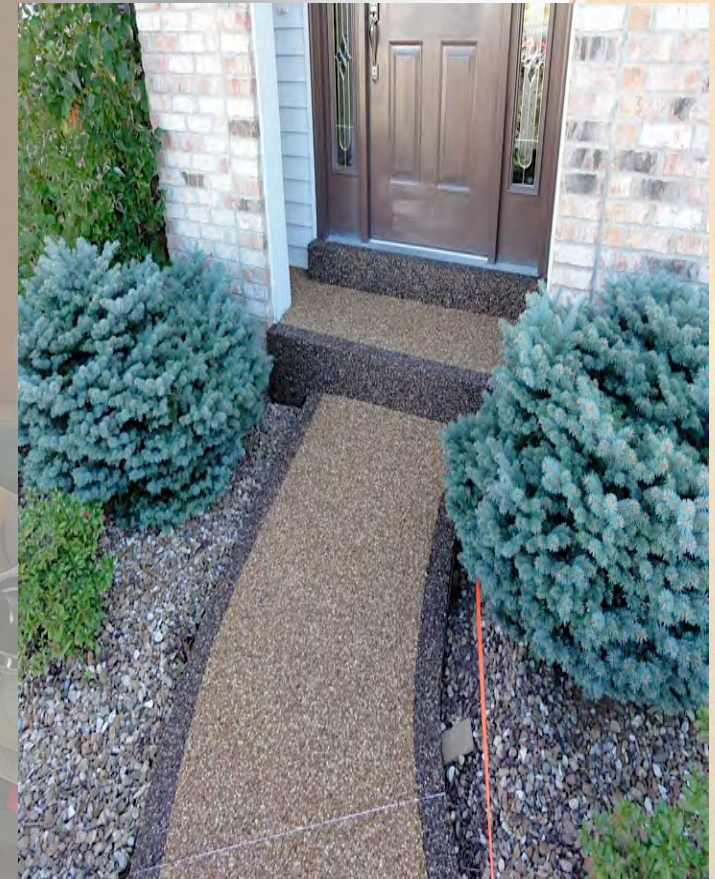
**Would you like for
your REAL STONE flooring
to manage to
SAVE MONEY, SAVE MESS, BE 100%
DRAINING, 100% GREEN and
AESTHETICALLY PLEASING?**



dream reality since 1964



dream reality since 1964



**POLYURETHANE
& REAL STONE SYSTEM
SISTEMA PIETRA&RESINA**



via Genova 20, 24040 Ciserano (BG)
Tel. +39 035.882.350 Fax +39 035.883.181
www.apsebg.it

info@apsebg.it



**SAVE MONEY, SAVE MESS, SAVE THE ENVIRONMENT!
CHOOSE SIZE AND COLOR AND WHERE TO USE IT!**

**RISPARMIA TEMPO, DENARO E FATICA E SALVA
L'AMBIENTE! SCEGLI I COLORI E DOVE USARLI!**

No need for demolition!

Non necessita di demolizione!

Countless natural chromatic combinations

Combinazioni cromatiche infinite

Pedestrian or bicycle flooring in scenarios with high vehicle traffic (roads, car parks, etc)

Pavimenti urbani pedonabili o ciclabili anche per traffico pesante (strade, parcheggi, ecc.)

Outdoor flooring system, 100% draining

Sistema per pavimentazioni da esterni 100% drenant

Real Stone Aggregate flooring: NO harmful substances into the environment.
Ideal for restricted area to vehicular use

Pavimenti in aggregati di vera pietra: Nessuna sostanza dannosa per l'ambiente. Ideale per aree soggette a restrizioni sul traffico

ALL YOU NEED:

TUTTO QUEL DI CUI HAI BISOGNO



V&V
SRL

24040 Cserano (BG) Via Genova, 20
Tel. +39 035.882.350 Fax +39 035.883.181
www.apsebg.it

info@apsebg.it

APSE



Made in Italy



Made in Italy