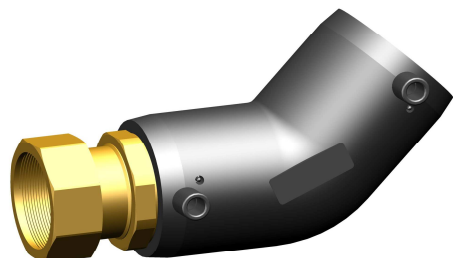
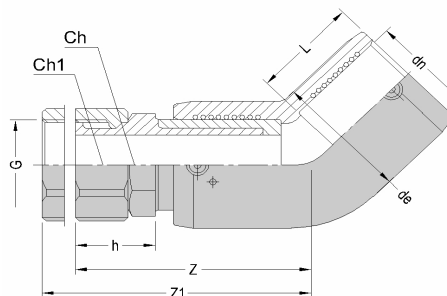


**PRODUCT DETAILS**



**DIMENSIONS AND WEIGHT**



ITEM	<b>2172160063</b>
dn [mm]	63
dn1 [mm]	
SDR	7,4
PN	25
MATERIAL	PE100
TRADEMARK	EURO
MANUFACTURING TYPE	INJECTION MOULDED
USE	WATER-GAS
QUANTITY PER BOX	2

dn	[mm]	63	2	[mm]	65
G	[mm]	2"	Ch1	[mm]	67
de	[mm]	82			
L	[mm]	52			
h	[mm]	39			
Z	[mm]	135			
Z1	[mm]	145	WEIGHT	[g]	970

Tolerance: +/- 5% excluding dn

NOTE:

**STANDARDS AND APPROVALS**

EN 12201  
EN 1555  
ISO 15494  
DVGW

**MARKING AND LABEL on fitting**



PE100 d63 SDR7.4 PN25

**WELDING INFORMATION**

RESISTANCE [Ohm]	0,64	Weldability barcode	98052118-063-8-24-064-6-110-74-2
VOLTAGE [V]	24		
FUSION TIME [sec]	110	CIRCUIT TYPE	SINGLE WIRE
COOLING TIME [min]	15	CONNECTOR DIAMETER [mm]	4,0

**WELDABILITY on pipe/fitting :**

SDR 26	NO
SDR 17	NO
SDR 11	YES
SDR 9	YES
SDR 7,4	YES

**INFOS**

- During the screwing, lock the metallic hexagon to avoid any stress on the PE part
- Suitable for gas and water pipelines
- Do not remove the insert

- Moulded in PE100-RC

All dimensions are in millimeters and are intended as nominal and standard sizes: weights are in grams.  
EUROSTANDARD reserves the right to change geometries and dimensions of any product.