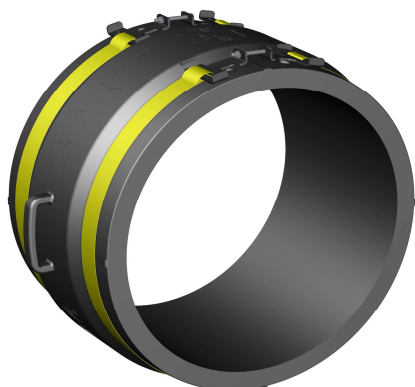
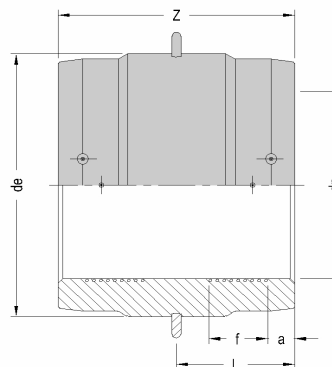


PRODUCT DETAILS



DIMENSIONS AND WEIGHT



ITEM	2100160560
dn [mm]	560
dn1 [mm]	
SDR	11
PN	16
MATERIAL	PE100
TRADEMARK	EURO
MANUFACTURING TYPE	INJECTION MOULDED
USE	WATER-GAS
QUANTITY PER BOX	1

NOTE:

dn	[mm]	560	
de	[mm]	672	
L	[mm]	193	
f	[mm]	90	
a	[mm]	50	
Z	[mm]	385	
WEIGHT			[g] 33000

Tolerance: +/- 5% excluding dn

STANDARDS AND APPROVALS

EN 12201
EN 1555
ISO 15494
DVGW

MARKING AND LABEL on fitting



PE100 d560 SDR11 PN16

WELDING INFORMATION

RESISTANCE [Ohm]	0,43	Weldability barcode	35211815-560-8-36-043-6-920-74-9
VOLTAGE [V]	36		
FUSION TIME [sec]	1200	CIRCUIT TYPE	DOUBLE WIRE
COOLING TIME [min]	50	CONNECTOR DIAMETER [mm]	4,0

WELDABILITY on pipe/fitting :

SDR 33	NO	
SDR 26	YES	only with electrofusion universal units
SDR 17	YES	only with electrofusion universal units
SDR 11	YES	only with electrofusion universal units
SDR 9	NO	
SDR 7,4	NO	

INFOS

- ABSOLUTELY compulsory the use of aligning clamp for all diameters
- ABSOLUTELY compulsory the pipes/fittings scraping
- Two separate fusion zones and electrically independent

- Moulded in PE100-RC

All dimensions are in millimeters and are intended as nominal and standard sizes: weights are in grams.
EUROSTANDARD reserves the right to change geometries and dimensions of any product.